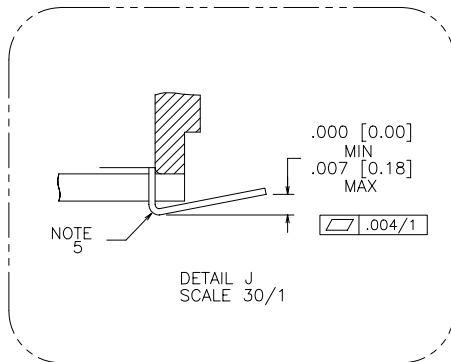
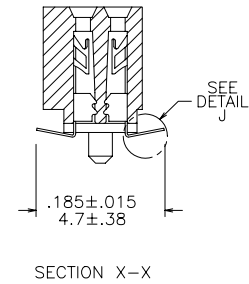
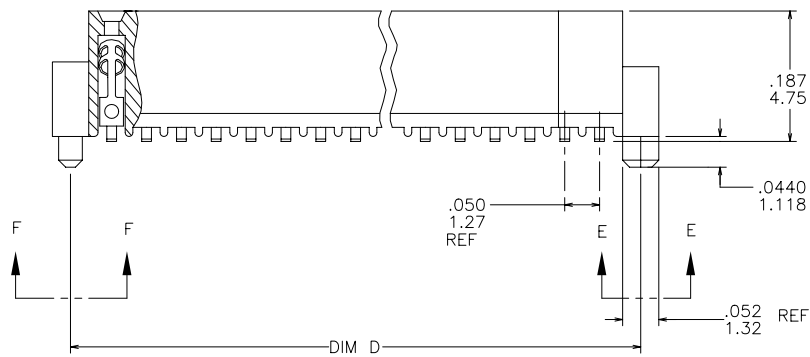
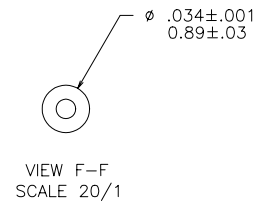
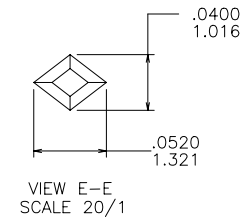
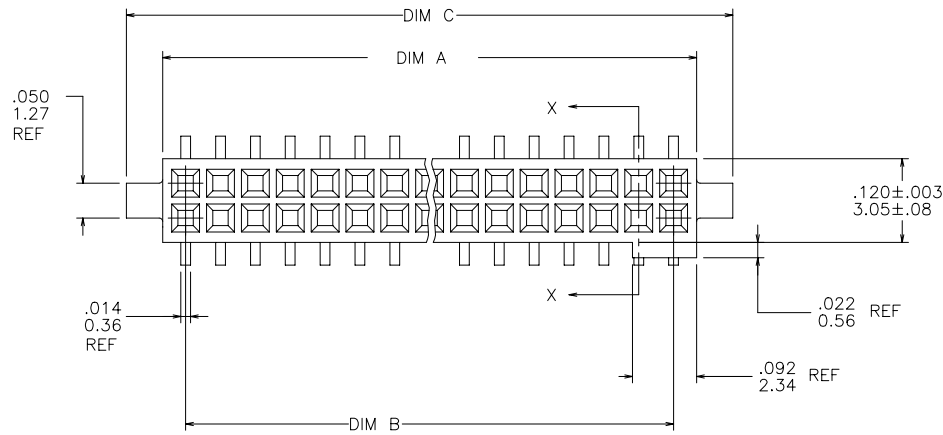




FCIconnect.com

Copyright FCI

PRODUCT NUMBER  
SEE TABLE



mat'l. code -				surface ISO 1302 ✓	tolerance ISO 406 ISO 1101	projection INCH/MM	product family RIB CAGE
ltr	ecn	no	dr	date	tolerances unless otherwise specified	scale 4:1	title
G	v81307	EPK	8/25/98		angles linear	xx ±.01/.3	.050/1.27 VERTICAL CARD CONNECTOR
H	v90118	EPK	3/17/99			xxx ±.005/.13	SURF. MT. W/LOC. AND POL. FEATURES
J	v02780	DLW	12/14/00		σ±2°	xxxx ±.0020/.050	
K	v10994	DLW	3/09/01	dr	M. CORNMAN	6/10/92	dwg no
L	v11674	CRG	7/16/01	enr	J. SHUEY	6/10/92	sheet 1 of 2 size
M	M05-0123	ERE	6/10/05	chr	C. GINGRICH	6/10/92	92074 A3
N	M06-0284	AEA	7/27/06	appd	J. SHUEY	6/10/92	type
sheet	revision	N	N				Product Customer Drawing
index	sheet	1	2				

form: A3

PDM: Rev:N

STATUS Released

Printed: Apr 15, 2008

PRODUCT NO.	SIZE	DIM A	DIM B	DIM C	DIM D
92074-605	2 X 5	.266/6.756	.200/5.08	.370/9.398	.3200/8.128
-610	2 X 10	.516/13.106	.450/11.43	.620/15.748	.5700/14.478
-615	2 X 15	.766/19.456	.700/17.78	.870/22.098	.8200/20.828
-620	2 X 20	1.016/25.806	.950/24.13	1.120/28.448	1.0700/27.178
-625	2 X 25	1.266/32.156	1.200/30.48	1.370/34.798	1.3200/33.528
-630	2 X 30	1.516/38.506	1.450/36.83	1.620/41.148	1.5700/39.878
-635	2 X 35	1.766/44.856	1.700/43.18	1.870/47.498	1.8200/46.228
-640	2 X 40	2.016/51.206	1.950/49.53	2.120/53.848	2.0700/52.578
-645	2 X 45	2.266/57.556	2.200/55.88	2.370/60.198	2.3200/58.928
92074-650	2 X 50	2.516/63.906	2.450/62.23	2.620/66.548	2.5700/65.278
92074-605LF	2 X 5	.266/6.756	.200/5.08	.370/9.398	.3200/8.128
-610LF	2 X 10	.516/13.106	.450/11.43	.620/15.748	.5700/14.478
-615LF	2 X 15	.766/19.456	.700/17.78	.870/22.098	.8200/20.828
-620LF	2 X 20	1.016/25.806	.950/24.13	1.120/28.448	1.0700/27.178
-625LF	2 X 25	1.266/32.156	1.200/30.48	1.370/34.798	1.3200/33.528
-630LF	2 X 30	1.516/38.506	1.450/36.83	1.620/41.148	1.5700/39.878
-635LF	2 X 35	1.766/44.856	1.700/43.18	1.870/47.498	1.8200/46.228
-640LF	2 X 40	2.016/51.206	1.950/49.53	2.120/53.848	2.0700/52.578
-645LF	2 X 45	2.266/57.556	2.200/55.88	2.370/60.198	2.3200/58.928
92074-650LF	2 X 50	2.516/63.906	2.450/62.23	2.620/66.548	2.5700/65.278

# NOTES:

- HOUSING MATERIAL:  
GLASS FILLED THERMOPLASTIC FLAME RETARDANT PER UL 94V-0  
COLOR: BLACK
- TERMINAL MATERIAL: BeCu
- TERMINAL PLATING:  
30u"/.76u MIN HARD GOLD OVER Ni ON CONTACT ZONES.  
100u"/2.54u MIN TIN LEAD OVER Ni IN SOLDERING ZONES.  
OTHERWISE GOLD FLASH OR UNPLATED  
  
LEAD FREE OPTION:  
30u"/.76u MIN HARD GOLD OVER Ni ON CONTACT ZONES.  
100u"/2.54u MIN TIN OVER Ni IN SOLDERING ZONES.  
OTHERWISE GOLD FLASH OR UNPLATED
- APPLICATION INFORMATION:  
A. RECOMMENDED MOUNTING PAD PATTERN IS SHOWN IN FIGURE "A".  
B. MATING PINS TO BE .0176/.447 TO .0181/.459 DIA.  
C. MATING PIN TIPS TO BE IN TRUE POSITION TO MATING GRID WITHIN .006/.15 DIA.  
D. SUGGESTED MATING PIN LENGTH .130/3.30 ±.010/.25.
- LEAD TIPS TO BE ABOVE HEEL UP TO .007/0.18 MAX. COPLANARITY TO BE MEASURED AT LOWEST POINT (HEEL).
- ADD "CT" TO END OF DASH NUMBER FOR CONNECTOR WITH VACUUM CAP IN TUBE.
- PART NUMBERS WITH "LF" SUFFIX AT THE END ARE LEAD FREE
- IF P/N IS LF THE PRODUCT MEETS EUROPEAN UNION DIRECTIVES AND OTHER COUNTRY REGULATION AS DESCRIBED IN GS-22-008.
- THE HOUSING WILL WITHSTAND EXPOSURE TO 260°C PEAK TEMPERATURE FOR 20 SECONDS IN A CONVECTION INFRA-RED OR VAPOR PHASE REFLOW OVEN. SEE APPLICATION NOTES/PROCEDURES IF THEY ARE AVAILABLE.

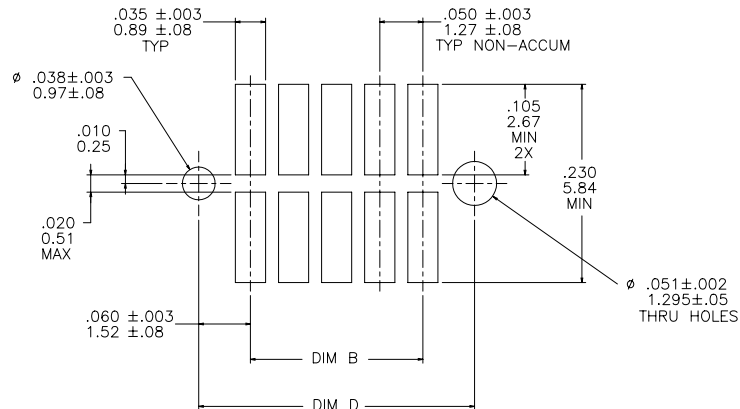


FIGURE A  
RECOMMENDED  
P.C.B. LAYOUT

mat'l. code				surface	tolerance	projection	product family
-				ISO 1302	ISO 406		RIB CAGE
ISO 1101				tolerances unless otherwise specified	linear	INCH/MM	title
ltr	ecr	no	dr	date	angles	scale 4:1	.050/1.27 VERTICAL CARD CONNECTOR
N					0°±2°		SURF. MT. W/LOC. AND POL. FEATURES
							dwg no
							92074
							sheet 2 of 2
							A3
							type
							Product Customer Drawing
sheet	revision						
index	sheet						